

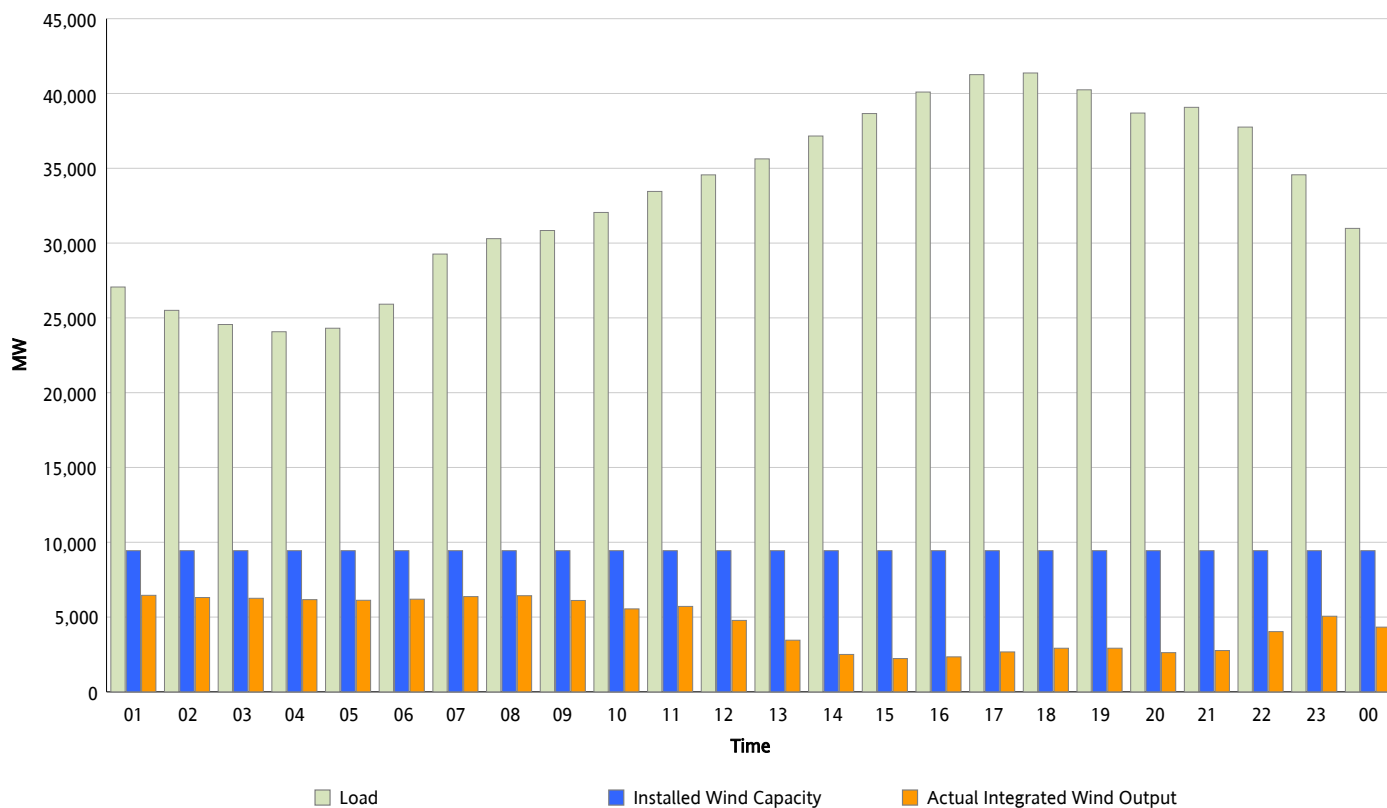


ERCOT Grid Operations

Wind Integration Report : 04/19/2012

Peak Load	41,368 MW
Load Peak Hour (HE)	18
Wind Over Peak	2,917 MW
Wind Record 04/13/12	7,925 MW
Max Wind Value*	6,572 MW
Wind Peak Time	00:05
Wind Integration %	23.67 %

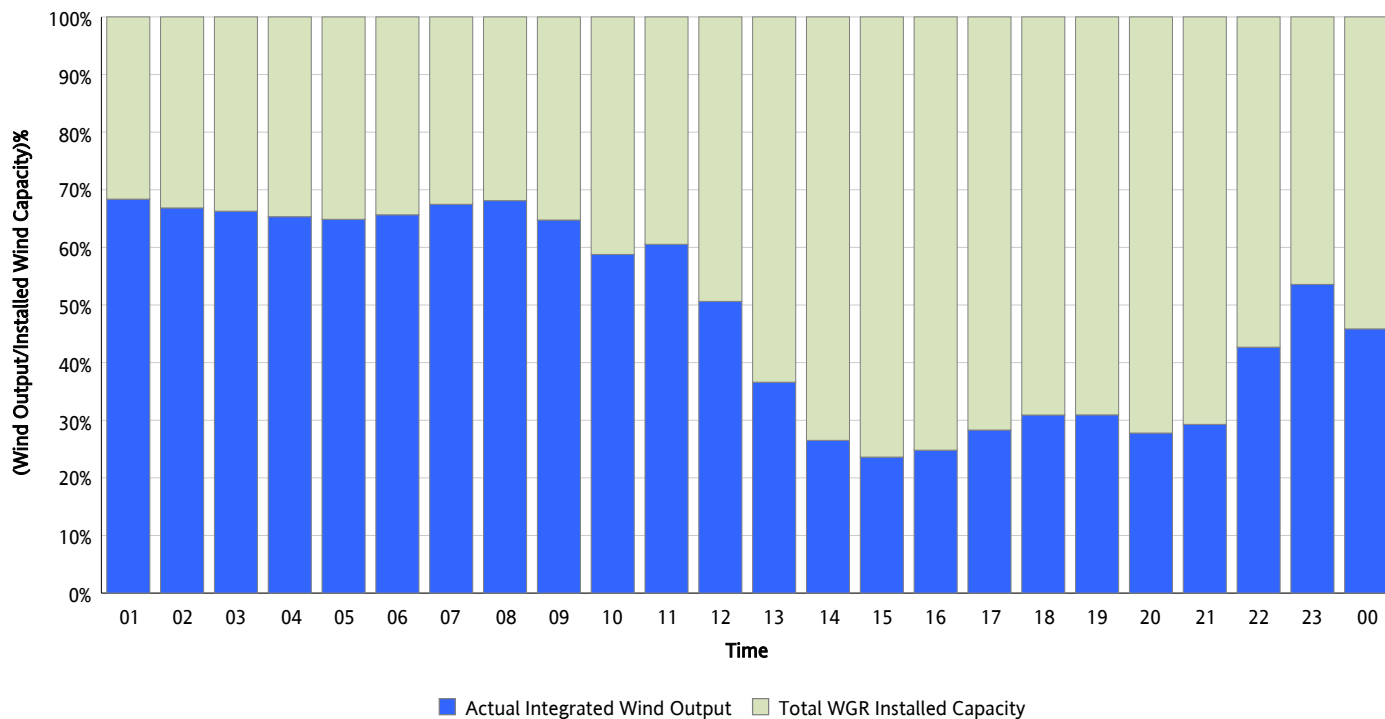
Hourly Average Actual Load vs. Actual Wind Output
04/19/2012



** Wind Record and Wind Max represent instantaneous values and the rest of the values are integrated over the hour*

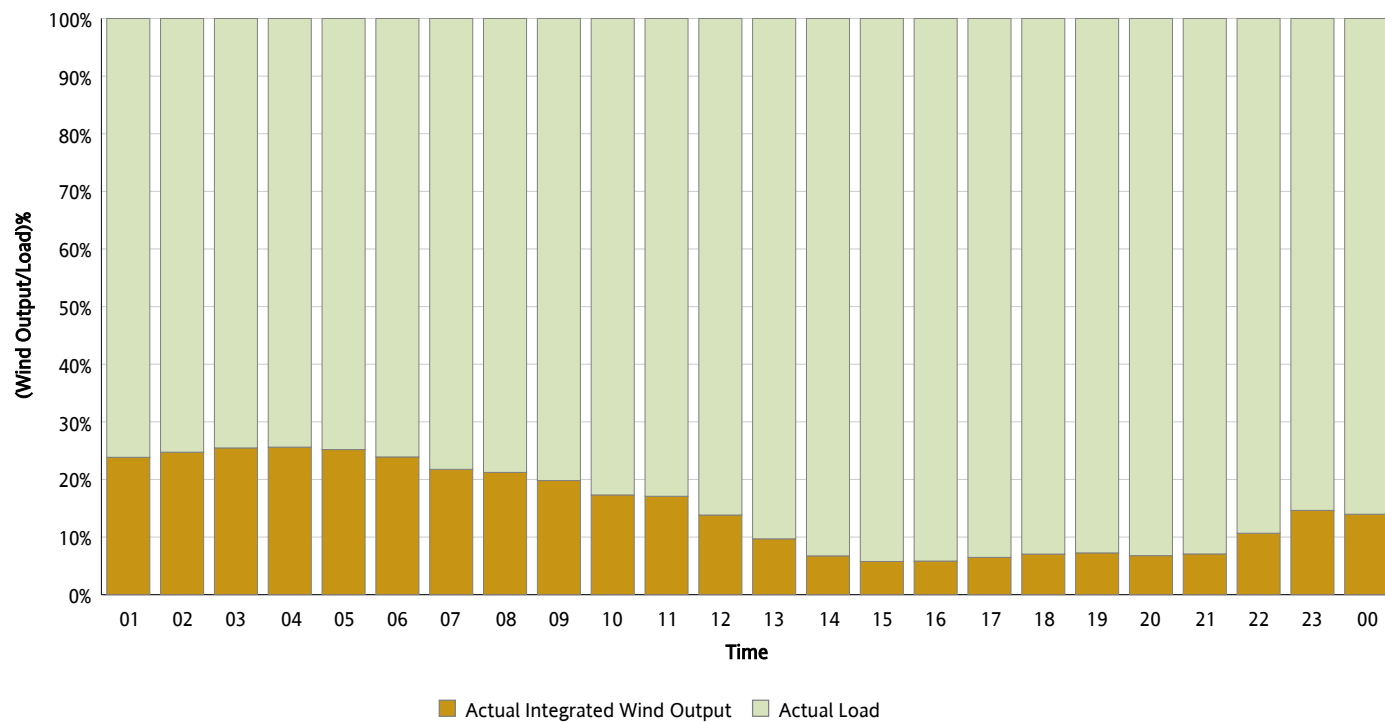
Actual Wind Output as a Percentage of the Total Installed Wind Capacity

04/19/2012



Actual Wind Output as a Percentage of the ERCOT Load

04/19/2012



ERCOT Load vs. Actual Wind Output

04/12/2012 - 04/19/2012

